



MEETING MINUTES

Helms Elementary School Construction Progress Meeting # 8

Date	Time	Purpose	Location
May 23, 2012	9:30am	Weekly Update	Helms ES, T Building
Prepared By – Tim Beally			
See Attached Attendee List			

1) CMPA/Owner Issues

- a) Unit Ventilators – expected ship date still is 06/19/12. Expected delivery is three days later.
- b) Whiteboards – expected delivery has slipped to mid-August.
- c) Public Address System Sub-Contractor
 - i) HIG plans to remove the PA system from AFS sub-contract and they will contract directly with Convergent for the PA system.
 - ii) HIG must submit request for approval to use Convergent as they are not a vendor listed in specification section 27 51 00.
- d) Fire Alarm System
 - i) HISD will not object to AFS installing the FA system.
 - ii) HIG needs to reinforce to AFS that they are being closely watched and this is an opportunity to do a good job.
- e) Chiller Shut Down – HIG will shut down the chiller and drain it for the summer work.
- f) Window Blinds – The school selected color 100 – vanilla – for the blinds.
- g) Electrical Sub-Contractor
 - i) HIG provided a letter to AECOM on the proposed electrical sub-contractor K-N-D.
 - ii) AECOM will forward it to HISD for review.

2) Architect / Consultants

- a) See other topical areas below.

3) Contractor

- a) See other topical areas below.

4) HAZMAT

- a) ERC provided a letter from HISD CFS dated October 28, 2011 (attached) which gives guidance on isolating abatement work from nearby sidewalks. ERC was informed by HISD to amend project specifications.
- b) It appears, based on the project scope of work, that the HISD letter does not impose additional requirements on the hazmat scope of work. However, if this does impose a change, there would need to be a change.
- c) AECOM asked ERC to send the letter to all.
- d) The possible change will be tracked as CPR 14. HIG will review and determine if there are any changes.

5) Safety

- a) HIG is having weekly safety meetings when work is occurring.

6) Schedule

- a) Schedule and two week look ahead are attached: concrete poured for the OAHU pads and classroom 6. Next week work will be site grading.
- b) Discussion:
 - i) Work should begin in earnest on 06/04/12.
 - (1) Turn off chiller
 - (2) Drain CW lines
 - (3) Hazmat abatement
 - (4) Restroom demolition

7) Change Proposals Request (CPRs) and Change Orders

- a) See CPR log (attached).
- b) Three CPRs have been added – 13, 14, and 15.
- c) HIG says CPR 5 is no cost.
- d) The school wants to retain the electric hand dryers in the restrooms. This will affect the pricing of CPR 7 and means CPR 6 will be deleted. FGC will reissue guidance for CPR 7.

8) Submittals

- a) Submittal log is attached.
- b) HIG has submitted sixty-five items. Last week they had submitted sixty-one items.
- c) Discussion on specific items:
 - i) AECOM observed most of the remaining items to be submitted are electrical.
 - ii) HIG said the following should be submitted shortly:
 - (1) FA system is approved
 - (2) Light fixtures should be no problem. They are easily available
 - (3) PA system – shortly.
 - (4) FGC will respond shortly on storefront and ceramic tile.

9) Requests for Information (RFIs)

- a) Two RFIs – 4 and 5 – were submitted. FGC will respond shortly.

10) Record Drawings / Permit

- a) FGC said the provided more comments on the revised drawing set.
- b) FGC is going to answer them but will break out the response to the Fire Marshall comments to allow the remaining portion of the permit review to continue.

11) Pay Application

- a) HIG submitted a draft pay application #1. All concurred. AECOM asked HIG to complete and send to FGC for processing.

12) Site Observations

- a) Concrete has been poured for the OAHU pads, some of the steps, and in classroom 6.

Next Meeting – Wednesday, May 30, 2012 at 9:30 AM

These minutes were prepared to accurately report the discussions, issues and decisions made at the above referenced meeting. If any attendee does not agree with the statements made above, please provide corrections in writing within three (3) days of receipt; otherwise, it is deemed all meeting participants are in agreement with the contents.



HOUSTON INDEPENDENT SCHOOL DISTRICT
Construction Services (Bond Program)
3500 Tampa Street • Houston, Texas 77021-1244

AECOM

SIGN-IN SHEET
HISD BOND PROGRAM

Project: Helms Elementary School Renovation

Meeting Date / Time: May 23, 2012, 9:30 AM

Meeting Purpose: Construction Meeting 8

Location: Helms ES

Name	Initial	Title	Company	Phone	Email Address
Tim Beally	TMB	PM	AECOM	713-267-3223	Tim.beally@aecom.com
Diana Del Pilar		Principal	HISD – Helms ES	713-867-5130	ddelpila@houstonisd.org
Brian Cox	BMC	Principal	Fehr Grossman Cox	713.797.0404	bcox@fgca.cc
Ron Hughes	RH	Project Manager	Jones Engineers	713-222-7766	rhuhges@jonesengineers.com
Wes Geyer		Project Manager	Horizon Intl. Group	832-347-7204	wgeyer@hgiusa.com
Russell McCown	RAM	Project Manager	Horizon Intl. Group	832-752-0066	rmccown@hgiusa.com
Gary McMaster	GM	Superintendent	Horizon Intl. Group	281-413-8112	gmcmaster@hgiusa.com
Mike Afshar	MA	PM	ERC	713-290-9444	mafshar@erc-tx.com



HOUSTON INDEPENDENT SCHOOL DISTRICT

Harper/CFS Administration

3200 Center Street
Houston, Tx 77007

October 28, 2011

Attn: Mr. Darrell Wilson,

Attached, you will find a copy of the General Specifications/ Bid Documents for Paul Revere Elementary School, and a drawing highlighting the need to include language in the contractor's specifications or include a document as an addendum to the specifications for future asbestos abatement projects. As per our conversation earlier this week, my concern is that on many occasions, I have observed the negative pressure exhaust duct extending through window openings at sidewalk level. The area around the exhaust duct is sealed with two layers of six (6)-mil polyethylene sheeting and taped to the interior of the window frame to create an airtight seal. Abatement contractors are in full compliance with all federal and state regulations in using this method to achieve negative pressure.

My concern is that students and pedestrian foot traffic can easily penetrate the poly barrier around the exhaust duct because of the sidewalk level location of the abatement. A rigid barrier should be placed in the window frames around the exhaust duct to prevent access into the containment through the windows. In absence of a rigid barrier students can easily penetrate the poly by hand pressure or by poking various instruments into the 6-mil poly barrier creating a situation that will subject students to asbestos fibers. In addition the district will also be subjected to visible emissions violations from state and local governmental agencies. This exposure period could occur at any time security is not available during school hours as well as after school hours. It is my opinion a need exist to include specific language in the consultants field specifications for enforcement purposes on all future HISD abatement projects.

Here is my version of the language that I would recommend the consultants use to incorporate in their field specifications. Please feel free to alter the language or make suggestions as required.

CONTROL ACCESS

Isolate the Work Area to prevent entry by unauthorized visitors into Work Areas or surrounding controlled areas.

"Houston Independent School District requires all asbestos abatement contractors use an impenetrable material to create a rigid barrier in window openings to prevent access to the containment at sidewalk level abatements. This material shall remain in place from the start of abatement activities through final clearance."

I am seeking your cooperation in drafting the correct language to be included in all field specifications or included as an addendum for future abatements. My preference is to have contractors include the above language included in their specifications. I will be forwarding you a hard copy of the specification today. I can be reached at 713-556-9332.

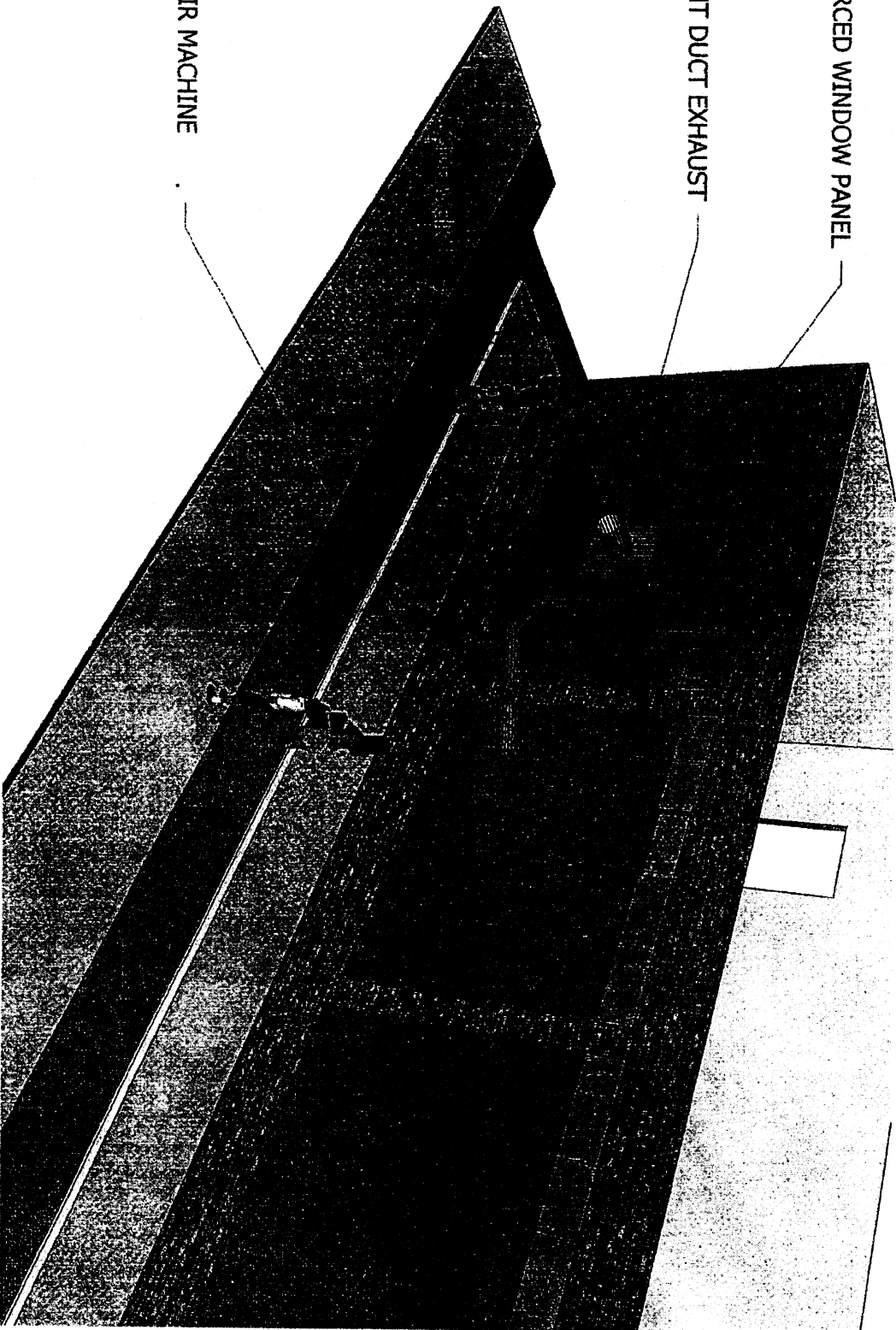
Thanks,
Paul Scott

Creating a College-Bound Culture

REINFORCED WINDOW PANEL

VENT DUCT EXHAUST

NEGATIVE AIR MACHINE





HOUSTON INDEPENDENT SCHOOL DISTRICT

Harper/CFS Administration

3200 Center Street
Houston, Tx 77007

November 2, 2011

Mr. Scott Lazar
Senior Manager
Facilities Maintenance

CONTROL ACCESS

Isolate the Work Area to provide site security and to prevent entry by unauthorized visitors into Work Areas or surrounding controlled areas.

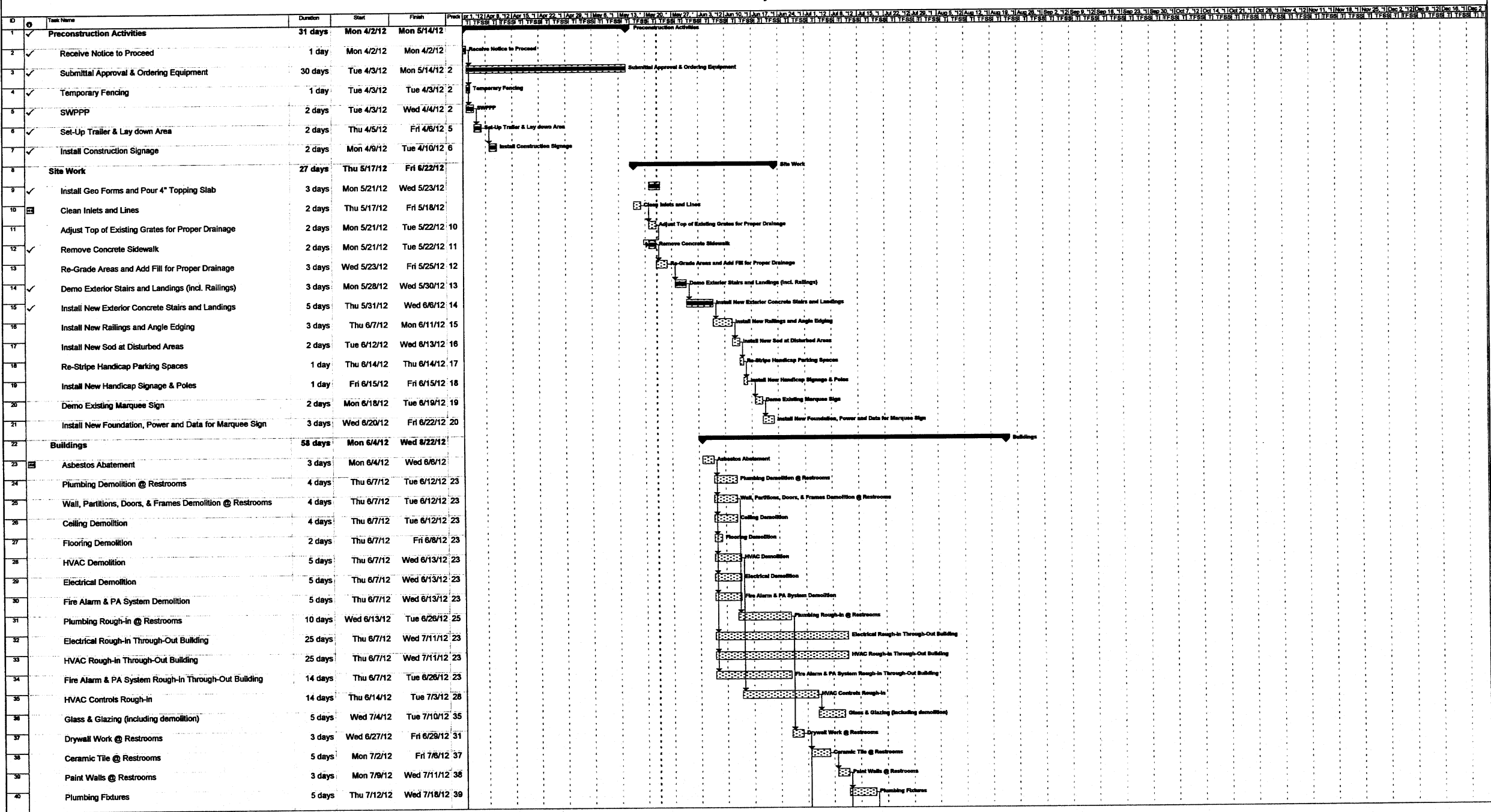
Houston Independent School District is requiring all asbestos abatement contractors use an impenetrable material (Secured Plywood or similar) to create a rigid barrier in windows / doorway openings used as exhaust points, to prevent access to the containment at sidewalk level abatements. "This material shall remain in place from the start of abatement activities through final clearance."

Barrier tape / warning signs compliant with state and federal safety and environmental regulations will be posted at each regulated area and the approaches to regulated areas inclusive of areas near or around HEPA exhausts. Regulated areas are those where the airborne concentrations of asbestos exceed, or there is a reasonable possibility they may exceed, the permissible exposure limits.

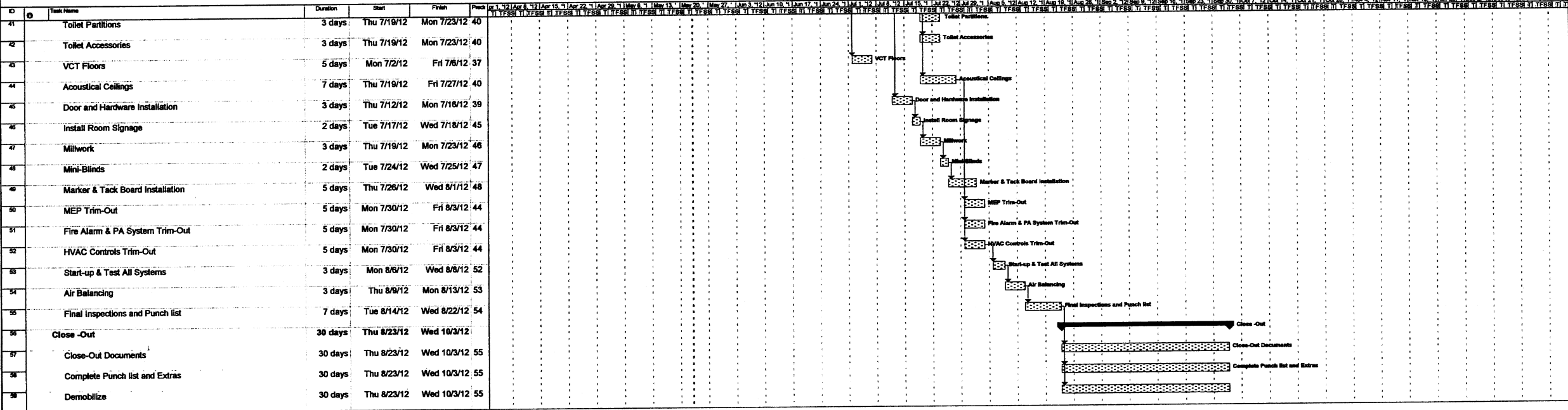
1 [REDACTED] 2 [REDACTED] 3 [REDACTED]

5/23/2012

Helms Elementary School



Helms Elementary School



HORIZON INTERNATIONAL GROUP, LLC

HISD HELMS ELEMENTARY SCHOOL RENOVATION

SCHEDULE OF VALUES

Draft

A	B	C	D	E	F	G		H	I
ITEM NO.	DESCRIPTION OF WORK	SCHEDULED VALUE	WORK COMPLETED		Materials Presently Stored	Total Completed and Stored to Date	%	Balance To Complete	Retainage
			From Previous Applications	This Period					
1	DIV. 1 - GENERAL CONDITIONS								
2	OH&P	\$119,705.00	\$0.00	\$0.00	\$0.00	\$0.00	0.00%	\$119,705.00	\$0.00
3	Payment/Performance Bond	\$30,824.00	\$0.00	\$30,824.00	\$0.00	\$30,824.00	100.00%	\$0.00	\$1,541.20
4	Builders Risk	\$20,000.00	\$0.00	\$20,000.00	\$0.00	\$20,000.00	100.00%	\$0.00	\$1,000.00
5	Project Management	\$22,765.00	\$0.00	\$2,276.50	\$0.00	\$2,276.50	10.00%	\$20,488.50	\$113.83
6	Supervision	\$50,712.00	\$0.00	\$5,071.20	\$0.00	\$5,071.20	10.00%	\$45,640.80	\$253.56
7	Office Trailer	\$4,286.00	\$0.00	\$428.60	\$0.00	\$428.60	10.00%	\$3,857.40	\$21.43
8	Dumpsters	\$3,628.00	\$0.00	\$362.80	\$0.00	\$362.80	10.00%	\$3,265.20	\$18.14
9	Barricades	\$1,500.00	\$0.00	\$0.00	\$0.00	\$0.00	0.00%	\$1,500.00	\$0.00
10	Sanitary Facilities	\$857.00	\$0.00	\$85.70	\$0.00	\$85.70	10.00%	\$771.30	\$4.29
11	General Labor	\$10,500.00	\$0.00	\$0.00	\$0.00	\$0.00	0.00%	\$10,500.00	\$0.00
12	Equipment & Material Handling	\$2,000.00	\$0.00	\$0.00	\$0.00	\$0.00	0.00%	\$2,000.00	\$0.00
13	Travel	\$2,857.00	\$0.00	\$0.00	\$0.00	\$0.00	0.00%	\$2,857.00	\$0.00
14	Job Phone	\$1,714.00	\$0.00	\$171.40	\$0.00	\$171.40	10.00%	\$1,542.60	\$8.57
15	Job Utilities	\$0.00	\$0.00	\$0.00	\$0.00	\$0.00	0.00%	\$0.00	\$0.00
16	Equipment Rental	\$3,628.00	\$0.00	\$0.00	\$0.00	\$0.00	0.00%	\$3,628.00	\$0.00
17	Job Sign	\$0.00	\$0.00	\$0.00	\$0.00	\$0.00	0.00%	\$0.00	\$0.00
18	Temporary Fencing & Security	\$500.00	\$0.00	\$250.00	\$0.00	\$250.00	50.00%	\$250.00	\$12.50
19	Storage Container	\$0.00	\$0.00	\$0.00	\$0.00	\$0.00	0.00%	\$0.00	\$0.00
20	General Clean-Up	\$0.00	\$0.00	\$0.00	\$0.00	\$0.00	0.00%	\$0.00	\$0.00
21	Final Clean - Sub	\$6,710.00	\$0.00	\$0.00	\$0.00	\$0.00	0.00%	\$6,710.00	\$0.00
22	Punch Out	\$0.00	\$0.00	\$0.00	\$0.00	\$0.00	0.00%	\$0.00	\$0.00
23	Close Out	\$0.00	\$0.00	\$0.00	\$0.00	\$0.00	0.00%	\$0.00	\$0.00
24	Layout & Surveying	\$0.00	\$0.00	\$0.00	\$0.00	\$0.00	0.00%	\$0.00	\$0.00
25	Office Admin	\$4,286.00	\$0.00	\$428.60	\$0.00	\$428.60	10.00%	\$3,857.40	\$21.43
26	SWPPP	\$0.00	\$0.00	\$0.00	\$0.00	\$0.00	0.00%	\$0.00	\$0.00
27	Permits	\$4,488.00	\$0.00	\$4,488.00	\$0.00	\$4,488.00	100.00%	\$0.00	\$224.40
28	ALLOWANCES								
29	HISD Allowance	\$10,000.00	\$0.00	\$0.00	\$0.00	\$0.00	0.00%	\$10,000.00	\$0.00
30	DIV. 2 - Site Work								
31	Landscaping/Site work	\$10,167.00	\$0.00	\$0.00	\$0.00	\$0.00	0.00%	\$10,167.00	\$0.00
32	Asbestos Abatement	\$11,200.00	\$0.00	\$0.00	\$0.00	\$0.00	0.00%	\$11,200.00	\$0.00
33	Demolition	\$13,675.00	\$0.00	\$0.00	\$0.00	\$0.00	0.00%	\$13,675.00	\$0.00
34		\$0.00	\$0.00	\$0.00	\$0.00	\$0.00	0.00%	\$0.00	\$0.00
35	Pavement Marking	\$2,160.00	\$0.00	\$0.00	\$0.00	\$0.00	0.00%	\$2,160.00	\$0.00
36	Fencing	\$6,200.00	\$0.00	\$0.00	\$0.00	\$0.00	0.00%	\$6,200.00	4 \$0.00

37	DIV. 3 - CONCRETE								
38	Cast-in-Place Concrete - Materials	\$10,300.00	\$0.00	\$9,270.00	\$0.00	\$9,270.00	90.00%	\$1,030.00	\$463.50
39	Cast-in-Place Concrete - Labor	\$7,000.00	\$0.00	\$6,300.00	\$0.00	\$6,300.00	90.00%	\$700.00	\$315.00
40									
41	DIV. 5 - STRUCTURAL								
42	Pipe & Tube Railings - Mat	\$20,000.00	\$0.00	\$0.00	\$0.00	\$0.00	0.00%	\$20,000.00	\$0.00
43	Pipe & Tube Railings - Lab	\$5,450.00	\$0.00	\$0.00	\$0.00	\$0.00	0.00%	\$5,450.00	\$0.00
44			\$0.00	\$0.00	\$0.00	\$0.00	0.00%	\$0.00	\$0.00
45	DIV. 6 - WOODS AND PLASTICS								
46	Rough Carpentry M	\$4,000.00	\$0.00	\$0.00	\$0.00	\$0.00	0.00%	\$4,000.00	\$0.00
47	Rough Carpentry L	\$2,500.00	\$0.00	\$0.00	\$0.00	\$0.00	0.00%	\$2,500.00	\$0.00
48	Millwork/Trim - M	\$12,000.00	\$0.00	\$0.00	\$0.00	\$0.00	0.00%	\$12,000.00	\$0.00
49	Millwork/Trim - L	\$8,000.00	\$0.00	\$0.00	\$0.00	\$0.00	0.00%	\$8,000.00	\$0.00
50			\$0.00	\$0.00	\$0.00	\$0.00	0.00%	\$0.00	\$0.00
51	DIV. 7 - THERMAL & MOISTURE								
52	Joint Sealants - M	\$20,000.00	\$0.00	\$0.00	\$0.00	\$0.00	0.00%	\$20,000.00	\$0.00
53	Joint Sealants - L	\$6,500.00	\$0.00	\$0.00	\$0.00	\$0.00	0.00%	\$6,500.00	\$0.00
54			\$0.00	\$0.00	\$0.00	\$0.00	0.00%	\$0.00	\$0.00
55	DIV. 8 - DOORS AND FRAMES								
56	Material Handling	\$893.00	\$0.00	\$0.00	\$0.00	\$0.00	0.00%	\$893.00	\$0.00
57	Steel Doors & Frames - M	\$62,100.00	\$0.00	\$0.00	\$0.00	\$0.00	0.00%	\$62,100.00	\$0.00
58	Install Door - L	\$4,500.00	\$0.00	\$0.00	\$0.00	\$0.00	0.00%	\$4,500.00	\$0.00
59	Window/Storefront - M	\$4,400.00	\$0.00	\$0.00	\$0.00	\$0.00	0.00%	\$4,400.00	\$0.00
60	Window/Storefront - L	\$1,899.00	\$0.00	\$0.00	\$0.00	\$0.00	0.00%	\$1,899.00	\$0.00
61	Hardware - M	\$0.00	\$0.00	\$0.00	\$0.00	\$0.00	0.00%	\$0.00	\$0.00
62	Install Hardware - L	\$4,525.00	\$0.00	\$0.00	\$0.00	\$0.00	0.00%	\$4,525.00	\$0.00
63			\$0.00	\$0.00	\$0.00	\$0.00	0.00%	\$0.00	\$0.00
64	DIV. 9 - FINISHES								
65	Portland Cement Plaster	\$0.00	\$0.00	\$0.00	\$0.00	\$0.00	0.00%	\$0.00	\$0.00
66	Metal Stud Framing - M	\$3,600.00	\$0.00	\$0.00	\$0.00	\$0.00	0.00%	\$3,600.00	\$0.00
67	Metal Stud Framing - L	\$2,500.00	\$0.00	\$0.00	\$0.00	\$0.00	0.00%	\$2,500.00	\$0.00
68	Drywall - M	\$3,773.00	\$0.00	\$0.00	\$0.00	\$0.00	0.00%	\$3,773.00	\$0.00
69	Drywall - L	\$2,500.00	\$0.00	\$0.00	\$0.00	\$0.00	0.00%	\$2,500.00	\$0.00
70	Ceramic Tile - Material	\$12,170.00	\$0.00	\$0.00	\$0.00	\$0.00	0.00%	\$12,170.00	\$0.00
71	Ceramic Tile - Labor	\$8,113.00	\$0.00	\$0.00	\$0.00	\$0.00	0.00%	\$8,113.00	\$0.00
72	Acoustical Ceilings - Material	\$8,076.00	\$0.00	\$0.00	\$0.00	\$0.00	0.00%	\$8,076.00	\$0.00
73	Acoustical Ceilings - Labor	\$5,384.00	\$0.00	\$0.00	\$0.00	\$0.00	0.00%	\$5,384.00	\$0.00
74	Painting - M	\$8,000.00	\$0.00	\$0.00	\$0.00	\$0.00	0.00%	\$8,000.00	\$0.00
75	Painting - L	\$12,000.00	\$0.00	\$0.00	\$0.00	\$0.00	0.00%	\$12,000.00	\$0.00
76	Resilient Flooring - M	\$11,115.00	\$0.00	\$0.00	\$0.00	\$0.00	0.00%	\$11,115.00	\$0.00
77	Resilient Flooring - L	\$0.00	\$0.00	\$0.00	\$0.00	\$0.00	0.00%	\$0.00	\$0.00
78	Rubber Base - M	\$0.00	\$0.00	\$0.00	\$0.00	\$0.00	0.00%	\$0.00	\$0.00
79	Rubber Base - L	\$0.00	\$0.00	\$0.00	\$0.00	\$0.00	0.00%	\$0.00	\$0.00
80	Floor Waxing	\$554.00	\$0.00	\$0.00	\$0.00	\$0.00	0.00%	\$554.00	\$0.00
81			\$0.00	\$0.00	\$0.00	\$0.00	0.00%	\$0.00	\$0.00

82	DIV. 10 - SPECIALTIES								
83	Toilet Compartments - M	\$15,138.00	\$0.00	\$0.00	\$0.00	\$0.00	0.00%	\$15,138.00	\$0.00
84	Toilet Compartments - L	\$6,487.00	\$0.00	\$0.00	\$0.00	\$0.00	0.00%	\$6,487.00	\$0.00
85	Signage - M	\$1,318.00	\$0.00	\$0.00	\$0.00	\$0.00	0.00%	\$1,318.00	\$0.00
86	Signage - L	\$500.00	\$0.00	\$0.00	\$0.00	\$0.00	0.00%	\$500.00	\$0.00
87	Fire Extinguishers/Cabinets - M	\$1,000.00	\$0.00	\$0.00	\$0.00	\$0.00	0.00%	\$1,000.00	\$0.00
88	Fire Extinguishers/Cabinets - L	\$450.00	\$0.00	\$0.00	\$0.00	\$0.00	0.00%	\$450.00	\$0.00
89	Toilet Accessories - M	\$0.00	\$0.00	\$0.00	\$0.00	\$0.00	0.00%	\$0.00	\$0.00
90	Toilet Accessories - L	\$0.00	\$0.00	\$0.00	\$0.00	\$0.00	0.00%	\$0.00	\$0.00
91	Marker/Tack Boards - M	\$12,929.00	\$0.00	\$0.00	\$0.00	\$0.00	0.00%	\$12,929.00	\$0.00
92	Marker/Tack Boards - L	\$0.00	\$0.00	\$0.00	\$0.00	\$0.00	0.00%	\$0.00	\$0.00
93			\$0.00	\$0.00	\$0.00	\$0.00	0.00%	\$0.00	\$0.00
94	DIV. 12 - FURNISHINGS								
95	Horizontal Window Blinds - M	\$673.00	\$0.00	\$0.00	\$0.00	\$0.00	0.00%	\$673.00	\$0.00
96	Horizontal Window Blinds - L	\$300.00	\$0.00	\$0.00	\$0.00	\$0.00	0.00%	\$300.00	\$0.00
97			\$0.00	\$0.00	\$0.00	\$0.00	0.00%	\$0.00	\$0.00
98	DIV. 22 - Plumbing								
99	Plumbing Rough In - M	\$14,625.00	\$0.00	\$0.00	\$0.00	\$0.00	0.00%	\$14,625.00	\$0.00
100	Plumbing Rough In - L	\$9,627.00	\$0.00	\$0.00	\$0.00	\$0.00	0.00%	\$9,627.00	\$0.00
101	Plumbing Insulation - M	\$3,771.00	\$0.00	\$0.00	\$0.00	\$0.00	0.00%	\$3,771.00	\$0.00
102	Plumbing Insulation - L	\$2,514.00	\$0.00	\$0.00	\$0.00	\$0.00	0.00%	\$2,514.00	\$0.00
103	Plumbing Fixtures - M	\$19,874.00	\$0.00	\$0.00	\$0.00	\$0.00	0.00%	\$19,874.00	\$0.00
104	Plumbing Fixtures - L	\$13,389.00	\$0.00	\$0.00	\$0.00	\$0.00	0.00%	\$13,389.00	\$0.00
105			\$0.00	\$0.00	\$0.00	\$0.00	0.00%	\$0.00	\$0.00
106	DIV. 23 - HVAC								
107	OAU's - M	\$120,517.00	\$0.00	\$0.00	\$0.00	\$0.00	0.00%	\$120,517.00	\$0.00
108	OAU'S - L	\$13,522.00	\$0.00	\$0.00	\$0.00	\$0.00	0.00%	\$13,522.00	\$0.00
109	Unit Ventilators, Fan coil Units - M	\$118,224.00	\$0.00	\$0.00	\$0.00	\$0.00	0.00%	\$118,224.00	\$0.00
110	Unit Ventilators, Fan coil Units - L	\$16,923.00	\$0.00	\$0.00	\$0.00	\$0.00	0.00%	\$16,923.00	\$0.00
111	Grilles, Registers, Boxes - M	\$9,489.00	\$0.00	\$0.00	\$0.00	\$0.00	0.00%	\$9,489.00	\$0.00
112	Grilles, Registers, Boxes - L	\$6,247.00	\$0.00	\$0.00	\$0.00	\$0.00	0.00%	\$6,247.00	\$0.00
113	Pipes, Valves Fitting for UV & FCU - M	\$47,104.00	\$0.00	\$0.00	\$0.00	\$0.00	0.00%	\$47,104.00	\$0.00
114	Pipes, Valves Fitting for UV & FCU - L	\$63,105.00	\$0.00	\$0.00	\$0.00	\$0.00	0.00%	\$63,105.00	\$0.00
115	Duct Fabrication, Installation - M	\$40,568.00	\$0.00	\$0.00	\$0.00	\$0.00	0.00%	\$40,568.00	\$0.00
116	Duct Fabrication, Installation - L	\$50,106.00	\$0.00	\$0.00	\$0.00	\$0.00	0.00%	\$50,106.00	\$0.00
117	Hangers & Supports - M	\$8,461.00	\$0.00	\$0.00	\$0.00	\$0.00	0.00%	\$8,461.00	\$0.00
118	Hangers & Supports - L	\$2,846.00	\$0.00	\$0.00	\$0.00	\$0.00	0.00%	\$2,846.00	\$0.00
119	Insulation - M	\$30,445.00	\$0.00	\$0.00	\$0.00	\$0.00	0.00%	\$30,445.00	\$0.00
120	Insulation - L	\$29,338.00	\$0.00	\$0.00	\$0.00	\$0.00	0.00%	\$29,338.00	\$0.00
121	Controls - M	\$112,600.00	\$0.00	\$0.00	\$0.00	\$0.00	0.00%	\$112,600.00	\$0.00
122	Controls - L	\$45,075.00	\$0.00	\$0.00	\$0.00	\$0.00	0.00%	\$45,075.00	\$0.00
123	Demolition - M	\$6,000.00	\$0.00	\$0.00	\$0.00	\$0.00	0.00%	\$6,000.00	\$0.00
124	Demolition - L	\$50,304.00	\$0.00	\$0.00	\$0.00	\$0.00	0.00%	\$50,304.00	\$0.00
125	Equipment Setting - M	\$5,693.00	\$0.00	\$0.00	\$0.00	\$0.00	0.00%	\$5,693.00	\$0.00
126	Equipment Setting - L	\$11,308.00	\$0.00	\$0.00	\$0.00	\$0.00	0.00%	\$11,308.00	\$0.00
127	Start Up/Commissioning - M	\$1,739.00	\$0.00	\$0.00	\$0.00	\$0.00	0.00%	\$1,739.00	\$0.00
128	Start Up/Commissioning - L	\$1,186.00	\$0.00	\$0.00	\$0.00	\$0.00	0.00%	\$1,186.00	\$0.00
129	Testing & Balancing	\$18,000.00	\$0.00	\$0.00	\$0.00	\$0.00	0.00%	\$18,000.00	\$0.00
130			\$0.00	\$0.00	\$0.00	\$0.00	0.00%	\$0.00	\$0.00

131	DIV. 26 - ELECTRICAL								
132	Mobilization	\$1,500.00	\$0.00	\$0.00	\$0.00	\$0.00	0.00%	\$1,500.00	\$0.00
133	Electrical Undergrounds - M	\$4,334.00	\$0.00	\$0.00	\$0.00	\$0.00	0.00%	\$4,334.00	\$0.00
134	Electrical Undergrounds - L	\$2,890.00	\$0.00	\$0.00	\$0.00	\$0.00	0.00%	\$2,890.00	\$0.00
135	Rough-In - M	\$42,508.00	\$0.00	\$0.00	\$0.00	\$0.00	0.00%	\$42,508.00	\$0.00
136	Rough-In - L	\$31,672.00	\$0.00	\$0.00	\$0.00	\$0.00	0.00%	\$31,672.00	\$0.00
137	Panels - Material	\$89,180.00	\$0.00	\$0.00	\$0.00	\$0.00	0.00%	\$89,180.00	\$0.00
138	Panels - Labor	\$68,120.00	\$0.00	\$0.00	\$0.00	\$0.00	0.00%	\$68,120.00	\$0.00
139	Lighting Fixture Package - Material	\$67,016.00	\$0.00	\$0.00	\$0.00	\$0.00	0.00%	\$67,016.00	\$0.00
140	Lighting Fixture Package - Labor	\$45,344.00	\$0.00	\$0.00	\$0.00	\$0.00	0.00%	\$45,344.00	\$0.00
141	Trim out - Materials	\$3,636.00	\$0.00	\$0.00	\$0.00	\$0.00	0.00%	\$3,636.00	\$0.00
142	Trim out - Labor	\$2,000.00	\$0.00	\$0.00	\$0.00	\$0.00	0.00%	\$2,000.00	\$0.00
143	Site work - Materials	\$1,000.00	\$0.00	\$0.00	\$0.00	\$0.00	0.00%	\$1,000.00	\$0.00
144	Site work - Labor	\$2,000.00	\$0.00	\$0.00	\$0.00	\$0.00	0.00%	\$2,000.00	\$0.00
145				\$0.00			0.00%		
146	DIV. 27 - DSTRIBUTED COMMUNICATIONS								
147	AND MONITORING SYSTEM								
148	PA System - M	\$30,716.00	\$0.00	\$0.00	\$0.00	\$0.00	0.00%	\$30,716.00	\$0.00
149	PA System - L	\$20,477.00	\$0.00	\$0.00	\$0.00	\$0.00	0.00%	\$20,477.00	\$0.00
150							0.00%		
151	DIV. 28 - Fire Alarm								
152	Fire Alarm - M	\$29,998.00	\$0.00	\$0.00	\$0.00	\$0.00	0.00%	\$29,998.00	\$0.00
153	Fire Alarm - L	\$20,000.00	\$0.00	\$0.00	\$0.00	\$0.00	0.00%	\$20,000.00	\$0.00
		\$1,970,000.00	\$0.00	\$79,956.80	\$0.00	\$79,956.80	4%	\$1,890,043.20	\$3,997.84


Submittal Log and Schedule - Helms Elementary School



		Log of Required Submittals													Horizon Group INTERNATIONAL	
		Total Open Submittals														
		Total Submittals in HGT's Office														
Spec Section		Specification Subdivision	Status / Revision	Description	Subcontractor	Date HGI Requested	Date Due	Date Received	Date HGI Sent Out	Engineer / Architect	Date Returned to HGI	Date Returned to Subcontractor	Resubmittal Required		Notes	
														Y	N	
Division 02 Site Work																
024119 Selective Demolition																
		1.6C		Schedule of Demolition Activities												
		1.6D		Inventory of Demolition Items												
		1.6E		Predemolition Photographs												
029200 Lawns and Grasses																
		1.4A		Product Data												
029500 Fences & Gates																
		1.4A	Approved	Product Data & Shop Drawings	National Fence	04/09/12	04/09/12	04/09/12	04/10/12	Arch.	4/10/12	4/11/12		N		
Division 03 Concrete																
033000 Cast-In-Place-Concrete																
		1.2C		Design Mixes	Elite	03/30/12	03/30/12	04/02/12	04/02/12	Arch.	4/30/12	5/1/12		N		
		1.2D	As Noted	Reinforcement Shop Drawings	Elite	03/30/12	03/30/12	04/03/12	04/03/12	Arch.	4/5/12	4/6/12		N		
		1.2E		Expanded Polystyrene (EPS) Geofoam	Elite	04/03/12	04/03/12	04/03/12	04/03/12	Arch.	4/5/12	4/6/12		N		
Division 05 Metals																
055213 Pipe and Tube Railings																
		1.4A		Product Data	Gulf Coast											
		1.4B		Shop Drawings	Gulf Coast											
		1.5A		Paint Compatability	Gulf Coast											
Division 06 Wood and Plastics																
061053 Miscellaneous Rough Carpentry																
		1.4A		Product Data	Xtreme Const											
064023 Interior Architectural Woodwork																
		1.4A		Product Data	Xtreme Const											
		1.4C		Shop Drawings	Xtreme Const											
		1.4D		Samples	Xtreme Const											
		1.4E		Product Certificates	Xtreme Const											
Division 07 Thermal And Moisture Protection																
079200 Joint Sealants																
		D.1		Product Data												
		D.2		Samples												
		D.4		Product Certificates												
Division 08 - Doors And Windows																
081113 Hollow Metal Doors and Frames																
		1.4A		Product Data	Xtreme Const											
		1.4B		Shop Drawings	Xtreme Const											
		1.4C		Samples	Xtreme Const											
082120 Solid Core Plastic Laminate Faced Doors																

Submittal Log and Schedule - Helms Elementary School



		Log of Required Submittals					Schedule		Submittal Distribution			Disposition of Submittal					
		Total Open Submittals															
		Total Submittals in HGT's Office															
Spec Section		Specification Subdivision	Status / Revision	Description	Subcontractor	Date HGI Requested	Date Due	Date Received	Date HGI Sent Out	Engineer / Architect	Date Returned to HGI	Date Returned to Subcontractor	Resubmittal Required		Notes		
		C.1		Product Data	Xtreme Const												
		C.2		Shop Drawings	Xtreme Const												
		C.3		Samples	Xtreme Const												
084113 Aluminum Storefront																	
		D.1		Product Data	Mares Glass	05/17/12	05/17/12	05/17/12	05/18/12	Arch							
		D.2		Manufacturer Certification	Mares Glass	05/17/12	05/17/12	05/17/12	05/18/12	Arch							
		D.3		Shop Drawings	Mares Glass	05/17/12	05/17/12	05/17/12	05/18/12	Arch							
		D.4		Samples for Color Selection	Mares Glass												
		D.5		Samples for verification of Finishes	Mares Glass												
087100 Door Hardware																	
		1.4A		Product Data	Xtreme Const	04/30/12	04/30/12	04/30/12	04/30/12	Arch.	5/1/12	5/2/12	Y				
		1.4B		Hardware Schedule	Xtreme Const												
		1.4C		Keying Information	?												
088000 Glazing																	
		1.5A		Product Data/Shop Drawings	Mares Glass												
		1.5B		Samples of Glass	Mares Glass												
		1.5C		Samples of Gaskets	Mares Glass												
		1.5D		Manufacturer Certificate	Mares Glass												
		1.5F		Sealant Test Reports	Mares Glass												
Division 09 - Finishes																	
092200 Portland Cement Plaster																	
		1.3A		Product Data													
		1.3B		Shop Drawings													
		1.3C		Samples for Initial Selection													
		1.3D		Samples for Verification													
092210 Non-Structural Metal Framing																	
		1.3A		Product Data	ABC Const.												
092900 Gypsum Board																	
		1.3A		Product Data	ABC Const.												
		1.3B		Samples	ABC Const.												
093100 Ceramic Tile																	
		1.5A		Product Data	Bus. Floor Sol,	03/30/12	03/30/12	04/02/12	04/02/12	Arch	4/17/12	4/18/12	Y		Submit Product Samples		
		1.5C		Samples for Initial Selection	Bus. Floor Sol,	05/15/12	05/15/12	05/15/12	05/16/12	Arch.							
		1.5D		Samples for Verification	Bus. Floor Sol,	05/15/12	05/15/12	05/15/12	05/16/12	Arch.							
095113 Acoustical Panel Ceilings																	
		1.5A		Product Data	ABC Const.												
		1.5C		Samples	ABC Const.												
096516 Resilient Sheet Flooring																	
		1.3A		Product Data	Bus. Floor Sol,	03/30/12	03/30/12	04/02/12	04/02/12	Arch	4/17/12	4/18/12	Y		Submit Product Samples		
		1.3C		Samples	Bus. Floor Sol,												
096519 Resilient Tile Flooring																	
		1.3A		Product Data	Bus. Floor Sol,	03/30/12	03/30/12	04/02/12	04/02/12	Arch	4/17/12	4/18/12	Y		Submit Product Samples		

Submittal Log and Schedule - Helms Elementary School



Spec Section		Log of Required Submittals			Subcontractor	Schedule		Submittal Distribution			Disposition of Submittal				Notes	
		Total Open Submittals		Status / Revision		Description		Date HGI Requested	Date Due	Date Received	Date HGI Sent Out	Engineer / Architect	Date Returned to HGI	Date Returned to Subcontractor		Resubmittal Required
		Total Submittals in HGI's Office														
096520		1.3C		Samples	Bus. Floor Sol,											
		1.3a		Product Data	Bus. Floor Sol,											
		1.3B		Samples	Bus. Floor Sol,											
099113		Exterior Painting														
		1.3A		Product Data												
		1.3B		Samples												
		1.3C		Product List												
99123		Interior Painting														
		1.3A		Product Data												
		1.3B		Samples												
		1.3C		Product List												
Division 10: Specialties																
101000		Marker boards and Tack boards														
		1.10	As Noted	Product Data	Newline	04/03/12	04/10/12	04/10/12	04/10/12	Arch.	4/17/12	4/17/12		N		
		1.10	As Noted	Tack Board Color Chart	Newline	04/03/12	04/10/12	04/10/12	04/10/12	Arch.	4/17/12	4/17/12		N		
101550		Toilet Compartments														
		1.3 A	As Noted	Product Data	PBJ Spec.	03/27/12	03/27/12	03/27/12	03/30/12	Arch	4/3/12	4/4/12		N		
		1.3B	As Noted	Shop Drawings	PBJ Spec.	03/27/12	03/27/12	03/27/12	03/30/12	Arch	4/3/12	4/4/12		N		
		1.3C	As Noted	Color Samples	PBJ Spec.	03/27/12	03/27/12	03/27/12	03/30/12	Arch	4/3/12	4/4/12		N		
102800		Toilet Accessories														
		1.2A	As Noted	Product Data	PBJ Spec.	03/27/12	03/27/12	03/27/12	03/28/12	Arch	4/17/12	4/17/12		N		
104410		Interior Unframed Signs														
		1.3B		Product Data	Nova Graphics											
		1.3C		Shop Drawings	Nova Graphics											
		1.3D		Samples	Nova Graphics											
Division 12: Furnishings																
122113		Horizontal Louver Blinds														
		1.3A	As Noted	Product Data	Capitol Blind	03/30/12	04/04/12	04/04/12	04/25/12	Arch	5/1/12	5/2/12		N		
		1.3B	As Noted	Shop Drawings	Capitol Blind	03/30/12	04/04/12	04/04/12	04/25/12	Arch	5/1/12	5/2/12		N		
		1.3C	As Noted	Color Samples	Capitol Blind	03/30/12	04/04/12	04/04/12	04/25/12	Arch	5/1/12	5/2/12		N		
Division 22: Plumbing																
22 05 23		General Duty Valves for Plumbing Piping														
		1.4A	Approved	Product Data	Unique Plumb	03/30/12	04/05/12	04/05/12	04/06/12	Eng.	4/10/12	4/10/12		N		
22 05 29		Hangers and Supports for Plumbing Piping and Equipment														
		1.5A	Approved	Product Data	Unique Plumb	03/30/12	04/05/12	04/05/12	04/06/12	Eng.	4/10/12	4/10/12		N		
22 07 19		Plumbing Piping Insulation														
		1.3A	Approved	Product Data	Unique Plumb	03/30/12	04/05/12	04/05/12	04/06/12	Eng.	4/10/12	4/10/12		N		
		1.3D	Approved	Material Test Reports	Unique Plumb	03/30/12	04/05/12	04/05/12	04/06/12	Eng.	4/10/12	4/10/12		N		
22 11 16		Domestic Water Piping														

Submittal Log and Schedule - Helms Elementary School



Spec Section		Log of Required Submittals			Subcontractor	Schedule		Submittal Distribution			Disposition of Submittal				Notes
		Total Open Submittals													
		Total Submittals in HGT's Office													
Spec Section		Specification Subdivision	Status / Revision	Description	Subcontractor	Date HGI Requested	Date Due	Date Received	Date HGI Sent Out	Engineer / Architect	Date Returned to HGI	Date Returned to Subcontractor	Resubmittal Required		
		1.3A	Approved	Product Data	Unique Plumb	03/30/12	04/05/12	04/05/12	04/06/12	Eng.	4/10/12	4/10/12		N	
22 11 19 Domestic Water Piping Specialties															
		1.4A	As Noted	Product Data	Unique Plumb	03/30/12	04/05/12	04/05/12	04/06/12	Eng.	4/13/12	4/16/12		N	
22 13 16 Sanitary Waste and Vent Piping															
		1.4A	Approved	Product Data	Unique Plumb	03/30/12	04/05/12	04/05/12	04/06/12	Eng.	4/10/12	4/10/12		N	
22 40 00 Plumbing Fixtures															
		1.4A	As Noted	Product Data	Unique Plumb	03/30/12	04/05/12	04/05/12	04/06/12	Eng.	4/13/12	4/16/12	Y		re-submit items requested
22 47 0 Drinking Fountains and Water Coolers															
		1.4A	Approved	Product Data	Unique Plumb	03/30/12	04/05/12	04/05/12	04/06/12	Eng.	4/10/12	4/10/12		N	
Division 23 - Mechanical															
23 05 18 Escutcheons for HVAC Piping															
		1.3A		Product Data	LMI										
23 05 19 Meters and Gauges for HVAC Piping															
		1.3A		Product Data	LMI										
23 05 23 General Duty Valves for HVAC Piping															
		1.4A		Product Data	LMI										
23 05 29 Hangers and Supports for HVAC Piping & Equipment															
		1.5A		Product Data	LMI										
23 05 53 Identification for HVAC Piping & Equipment															
		1.3A		Product Data	LMI										
		1.3B		Equipment Label Schedule	LMI										
23 05 93 Testing, Adjusting, and Balancing for HVAC															
		1.4A	Approved	Qualification Data	LMI										
		1.4B	Approved	Contract Documents Examination Report	LMI										
		1.4D	Approved	Certified TAB Reports	LMI										
		1.4F	Approved	Instrument Calibration Reports	LMI										
23 07 00 HVAC Insulation															
		1.3A		Product Data	LMI										
		1.3C		Material Test Reports	LMI										
23 07 19 HVAC Piping Insulation															
		1.1	As Noted	Product Data	LMI	05/09/12	05/09/12	05/09/12	05/09/12	Eng.	5/11/12	5/14/12		N	
		1.1 R1		Product Data	LMI	05/23/12	05/23/12	05/23/12	05/23/12	Eng.					
23 09 00 Instrumentation and Control for HVAC															
		1.1A	R & R	Product Data - Valve & Damper	LMI	04/20/12	04/20/12	04/20/12	04/24/12	Eng.	4/24/12	5/1/12	Y		
		1.1A-1	R & R	Product Data - Motor Starter	LMI	04/20/12	04/20/12	04/20/12	04/24/12	Eng.	4/24/12	5/1/12	Y		
		1.1B		Shop Drawings	LMI										
23 09 01 HVAC Lighting Control Integrated with BAS															
		1.1A		Product Data	LMI										
		1.1B		Shop Drawings	LMI										
23 21 13 Hydronic Piping															
		1.5A		Product Data	LMI										
		1.5B		Shop Drawings	LMI										

Submittal Log and Schedule - Helms Elementary School




		Log of Required Submittals				Schedule		Submittal Distribution		Disposition of Submittal					
		Total Open Submittals													
		Total Submittals in HGI's Office													
Spec Section		Specification Subdivision	Status / Revision	Description	Subcontractor	Date HGI Requested	Date Due	Date Received	Date HGI Sent Out	Engineer / Architect	Date Returned to HGI	Date Returned to Subcontractor	Resubmittal Required	Notes	
		1.5G		Water Analysis	LMI										
23 21 23 Hydronic Pumps															
		1.4A	Approved	Product Data	LMI	03/30/12	04/06/12	4-5-12	04/06/12	Eng.	4/10/12	4/10/12		N	
23 31 13 Metal Ducts															
		1.4A	Approved	Product Data	LMI	03/14/12	03/21/12	03/21/12	03/22/12	Eng.	3/27/12	3/29/12		N	
		1.4B		Shop Drawings	LMI										
23 33 00 Air Duct Accessories															
		1.3A	Approved	Product Data	LMI	03/14/12	03/21/12	03/21/12	03/22/12	Eng.	3/27/12	3/29/12		N	
		1.3B		Shop Drawings	LMI										
23 34 23 Power Ventilators															
		1.4A		Product Data	LMI	05/15/12	05/15/12	05/15/12	05/16/12	Eng.					
23 37 13 Diffusers, Registers, & Grilles															
		1.3A	Approved	Product Data	LMI	03/14/12	03/21/12	03/21/12	03/22/12	Eng.	3/27/12	3/29/12		N	
23 41 00 Particulate Air Filtration															
		1.3A		Product Data	LMI										
23 62 00 Packaged Compressor and Condenser Units															
		1.3A		Product Data	LMI										
		1.3B		Shop Drawings	LMI										
23 73 14 Modular Outdoor Central Station Air-Handling Units															
		1.3A		Product Data	LMI										
23 74 33 Packaged Outdoor Heating and Cooling Make-up Air Conditioners															
		1.4A	R&R	Product Data	LMI	03/14/12	03/29/12	03/30/12	03/30/12	Eng.	3/30/12	4/2/12	Y		
		1.4A R1		Product Data	LMI	04/30/12	04/30/12	04/30/12	04/30/12	Eng.	5/1/12	5/1/12		N	
		1.4B	R&R	Shop Drawings	LMI	03/14/12	03/29/12	03/30/12	03/30/12	Eng.	3/30/12	4/2/12	Y		
		1.4B R1		Shop Drawings	LMI	04/30/12	04/30/12	04/30/12	04/30/12	Eng.	5/1/12	5/1/12		N	
23 82 19 Fan Coil Units															
		1.4A	As Noted	Product Data	LMI	03/14/12	03/29/12	03/29/12	03/29/12	Eng.	4/10/12	4/10/12	Y		
		1.4A R1	As Noted	Product Data	LMI	04/20/12	04/20/12	04/20/12	04/24/12	Eng.	4/27/12	4/27/12	Y		Re-submitt Fcu's 5 & 5A
		1.4A R2	Approved	Product Data	LMI	04/30/12	04/30/12	04/30/12	04/30/12	Eng.	04/30/12	04/30/12		N	
		1.4B	As Noted	Shop Drawings	LMI	03/14/12	03/29/12	03/29/12	03/29/12	Eng.	4/10/12	4/10/12	Y		
		1.4B R1	As Noted	Shop Drawings	LMI	04/20/12	04/20/12	04/20/12	04/24/12	Eng.	4/27/12	4/27/12	Y		Re-submitt Fcu's 5 & 5A
		1.4B R2	Approved	Shop Drawings	LMI	04/30/12	04/30/12	04/30/12	04/30/12	Eng.	04/30/12	04/30/12		N	
		1.4C		Color Samples	LMI										
23 82 23 Unit Ventilators															
		1.4A	Approved	Product Data	LMI	03/14/12	03/29/12	03/29/12	03/29/12	Eng.	3/30/12	3/30/12		N	
		1.4B		Shop Drawings	LMI	03/14/12	03/29/12	03/29/12	03/29/12	Eng.	3/30/12	3/30/12		N	
Division 26 Electrical															
260200 Basic Materials & Methods															
		1.07C		Shop Drawings	State Wide Elec										
		1.07D		Product Data	State Wide Elec										
260300 Electrical Demolition Work															
		3.01F		Salvage List	State Wide Elec										

Submittal Log and Schedule - Helms Elementary School



Submittal Log and Schedule - Helms Elementary School														
Spec Section		Log of Required Submittals				Schedule		Submittal Distribution			Disposition of Submittal			
		Total Open Submittals												
		Total Submittals in HGI's Office												
Spec Section		Specification Subdivision	Status / Revision	Description	Subcontractor	Date HGI Requested	Date Due	Date Received	Date HGI Sent Out	Engineer / Architect	Date Returned to HGI	Date Returned to Subcontractor	Resubmittal Required	Notes
260500 Common Work Results for Electrical														
		1.4A		Product Data - Sleeve Seals	State Wide Elec									
26 05 63 Identification for Electrical Systems														
		1.2A		Product Data	State Wide Elec									
26 05 19 Low Voltage Electrical Power Conductors and Cables														
		1.4A		Product Data	State Wide Elec									
		1.4B		Qualification Data: for testing agency	State Wide Elec									
		1.4C		Field Quality -Control test reports	State Wide Elec									
26 05 26 Grounding & Bonding for Electrical Systems														
		1.3A		Product Data	State Wide Elec									
		1.3B		Qualification Data	State Wide Elec									
		1.3C		Field Quality Control test reports	State Wide Elec									
		1.3D		O&M Data - Close Outs	State Wide Elec									
26 05 29 Hangers & Supports for Electrical Systems														
		1.5A		Product Data	State Wide Elec									
26 05 33 Raceway & Boxes for Electrical Systems														
		1.4A		Product Data	State Wide Elec									
		1.4B		Shop Drawings	State Wide Elec									
26 09 24 Electrical Lighting Control Integrated with BAS														
		1.1E		Shop Drawings	State Wide Elec									
26 24 16 Panel boards														
		1.5A	As Noted	Product Data	State Wide Elec	04/05/12	04/05/12	04/20/12	04/25/12	Eng.	4/26/12	4/27/12	N	
		1.5B		Qualification Data	State Wide Elec									
		1.5C		Field Quality Control Reports	State Wide Elec									
		1.5D	As Noted	Panel board Schedules	State Wide Elec	04/05/12	04/05/12	04/20/12	04/25/12	Eng.	4/26/12	4/27/12	N	
		1.5E		O&M Data - Close Outs	State Wide Elec									
26 27 26 Wiring Devices														
		1.4A		Product Data	State Wide Elec									
		1.4B		Shop Drawings	State Wide Elec									
		1.4C		Samples	State Wide Elec									
		1.4D		Field Quality Control Reports	State Wide Elec									
		1.4E		O&M Data - Close Outs	State Wide Elec									
26 28 16 Enclosed Switches & Circuit Breakers														
		1.5A		Product Data	State Wide Elec									
		1.5B		Field Quality Control Reports	State Wide Elec									
		1.5C		Manufacturers Field Service Report	State Wide Elec									
		1.5D		O&M Manuals - Closeout	State Wide Elec									
26 29 23 Variable Frequency Motor Controllers - Installation														
		1.8A		Training Sign in Sheet	State Wide Elec									
26 51 00 Interior Lighting														
		1.3A	R&R	Product Data	State Wide Elec	04/06/12	04/06/12	04/06/12	04/09/12	Eng.	4/10/12	4/10/12	Y	
		1.3B	R&R	Installation Instructions	State Wide Elec	04/06/12	04/06/12	04/06/12	04/09/12	Eng.	4/10/12	4/10/12	Y	
		1.3C	R&R	Qualification Data	State Wide Elec	04/06/12	04/06/12	04/06/12	04/09/12	Eng.	4/10/12	4/10/12	Y	

Submittal Log and Schedule - Helms Elementary School															 Horizon Group INTERNATIONAL	
		Log of Required Submittals				Schedule		Submittal Distribution			Disposition of Submittal					
		Total Open Submittals														
		Total Submittals in HGI's Office														
Spec Section		Specification Subdivision	Status / Revision	Description	Subcontractor	Date HGI Requested	Date Due	Date Received	Date HGI Sent Out	Engineer / Architect	Date Returned to HGI	Date Returned to Subcontractor	Resubmittal Required		Notes	
		1.3D	R&R	Product Certificates	State Wide Elec	04/06/12	04/06/12	04/06/12	04/09/12	Eng.	4/10/12	4/10/12	Y			
		1.3E	R&R	Field Quality Control Reports	State Wide Elec	04/06/12	04/06/12	04/06/12	04/09/12	Eng.	4/10/12	4/10/12	Y			
		1.3F		O&M Manuals - Closeout	State Wide Elec											
26 56 00 Exterior Lighting																
		1.5A	R&R	Product Data	State Wide Elec	04/06/12	04/06/12	04/06/12	04/09/12	Eng.	4/10/12	4/10/12	Y			
		1.5E	R&R	Qualification Data	State Wide Elec	04/06/12	04/06/12	04/06/12	04/09/12	Eng.	4/10/12	4/10/12	Y			
		1.5F	R&R	Field Quality Reports	State Wide Elec	04/06/12	04/06/12	04/06/12	04/09/12	Eng.	4/10/12	4/10/12	Y			
		1.5G		O&M Manuals - Closeout	State Wide Elec											
		1.5H		Warranty - Sample of special warranty	State Wide Elec											
Division 27 - Communications																
27 51 00 Intercom																
		1.1		Product Data - Shop Drawings	AFS											
Division 28 - Electronic Safety And Security																
28 31 11 Digital Addressable Fire Alarm System																
		1.4A	Approved	Product Data	AFS	05/09/12	05/09/12	05/09/12	05/09/12	Eng.	5/17/12	5/18/12		N		
		1.4B	Approved	Shop Drawings	AFS	05/09/12	05/09/12	05/09/12	05/09/12	Eng.	5/17/12	5/18/12		N		
		1.4C	Approved	Suppliers Qualifications	AFS	05/09/12	05/09/12	05/09/12	05/09/12	Eng.	5/17/12	5/18/12		N		
		1.4D		Hourly Service Rate Schedule	AFS											
		1.4E		O&M Manuals - Close Out	AFS											
		1.4F		Warranty - Close Out	AFS											



Helms ES Renovation - Change Log

Helms ES Renovation - Change Log

CPRs on Hold, Cancelled or Done Through Alternative Means

[illegible]